

LICENSES

General.

For the use of BasSoftWare a license is needed. Without a license, the engine will work as a demo.

Limitations without a license.

The demo has the following limitations:

- Up to 26 lines are recorded
- A demo message will appear regularly
- Reports in the text preceded by DEMO:

Require a license.

For the Netherlands, contact one of our Partners, look on this webpage: <http://www.habas.nl/partners.htm>

For Poland, contact our Polish partner, look on this webpage: <http://www.budosoft.pl>

For other countries, write an e-mail to info@habas.nl

Move a license to a different computer.

General

An existing properly working license can be moved to a different computer.

First the license has to be de-installed. After done this, it is possible to install the same license on a different computer.

For doing this, you need to have the possibility to connect our server by a FTP connection.

The program will test for a proper FTP connection before de-installing a license.

De-installing and re-installing a license, done by your self, is without charges, so this is free.

Re-installing a license by us or by one of our Partners is also possible, but this will cost € 75,00 per license.

So never delete a working setup, or dispose a computer before you de-installed a license!

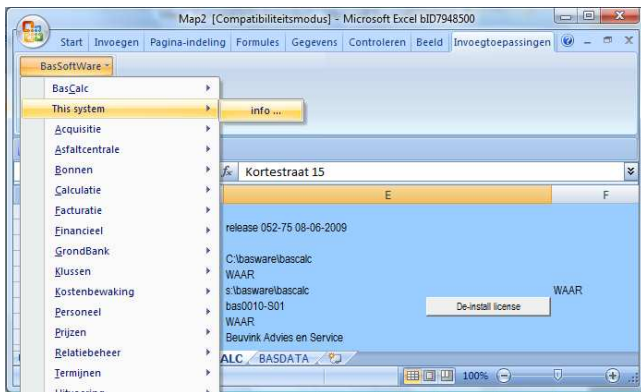
And if your computer crashed, don't blame us (...)

Step 1: De-installing the license

Start Excel and select the Excel menu-option Invoegtoepassingen – BasSoftWare – This system – info ...

A new Excel workbook will appear. This workbook contains a sheet for every BasSoftWare Add-In.

Select the correct sheet and press the button **De-install license**.



Step 2: Copy the folder c:\basware to the new computer

Make a copy of the folder c:\basware and put it at a different computer.

Step 3: Run the program reg_bsw.exe to register the Add-Ins

This program is available in the folder \basware

Double click on it to run it.

Step 4: Re-installing the license

Start Excel and select the Excel menu-option Invoegtoepassingen – BasSoftWare – This system – info ...

A new Excel workbook will appear. This workbook contains a sheet for every BasSoftWare Add-In.

Select the correct sheet and press the button **Re-install license**.